



Suzhou • China



# LED NEON TUBE RGB

## RGB5050



RoHS



## APPLICATION

Landscape lighting, room decoration, architectural decoration and so on

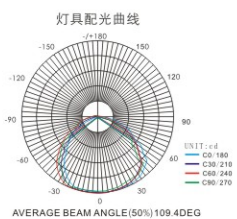
## FEATURES

- » Integrated molding technique with silicon
- » UV protection
- » High temperature resistance
- » Uniform color temperature
- » Arbitrary bending

## SPECIFICATIONS

Item No	RNS-5050-120-12-RGB
LEDs/m	60pcs/m
Voltage	DC12V
Wattage/m	≤12W
Lumen output/m	--
View angle	180°
IP rate	IP65
Operating Temperature	-25~ +60°C
N.W. (g)	1006g/bag
package	5m/reel

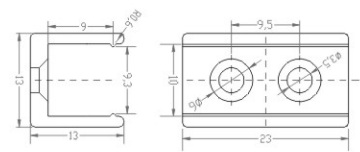
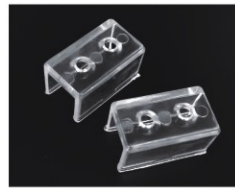
## LIGHT DISTRIBUTION CHARACTERISTICS



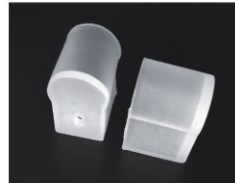
Height	AVR	E	CENTER	E	Diameter
1.50m	11.02lx		29.11lx		361.55cm
2.00m	6.20lx		16.38lx		482.07cm
4.00m	1.55lx		4.09lx		964.14cm
4.50m	1.22lx		3.23lx		1084.66cm
6.00m	0.69lx		1.82lx		1446.21cm

## Accessories FIG

### CLIP



### ENDCAP



### SMPS



RWP-60W



RWP-100W

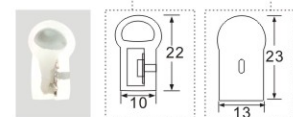
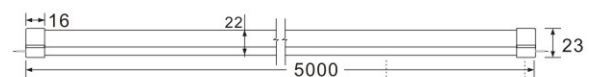
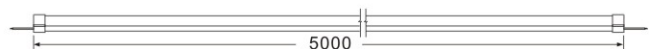


RWP-20W

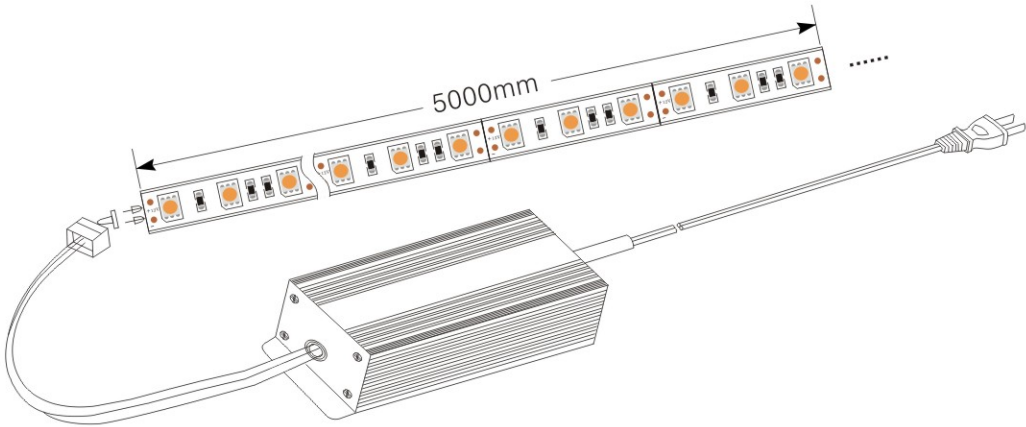
### 3M DOUBLE FACE GLUE TAPE



## DIMENSION



## INSTALLATION DIAGRAM



## PACKING METHOD



1PC in a string



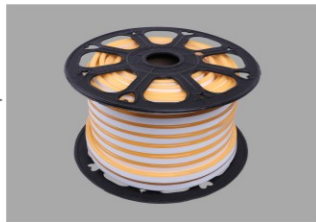
1PC in an antistatic bag



20PCS in a carton



1PC in a string



1PC in an antistatic bag



1PC in a carton



WE CHAT



www.repsn.com

SUZHOU REPSN PHOTOELECTRIC TECHNOLOGY CO.,LTD.

Add: NO.999 Xingdong Rd Wangshan industrial park Wuzhong district.Suzhou city.China

Tel: +86-0512-66536260

Http: //www.repsn.com Mail: led@repsn.com